

OMO5 Tokyo Otsuka by Hoshino Resorts

(Otsuka, Tokyo, Japan)

OMO, the fourth brand of Hoshino Resorts, launched OMO5 Tokyo Otsuka on May 9, 2018. Just a minute's walk from Otsuka Station, we're visible from the train platform and located in an area that straddles the line between the olden days and the present. You'll love walking around this "retro Tokyo" town and hearing the nostalgic sound of streetcar bells. We're here to help you discover a side of Tokyo you've never experienced before.

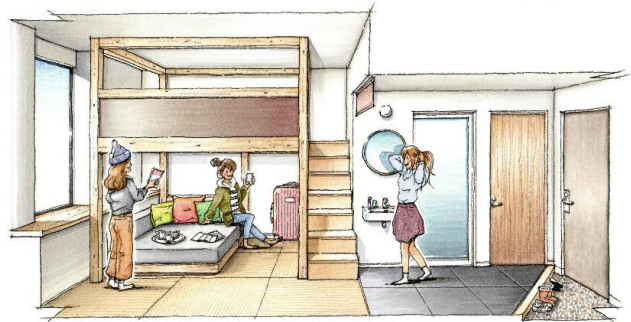
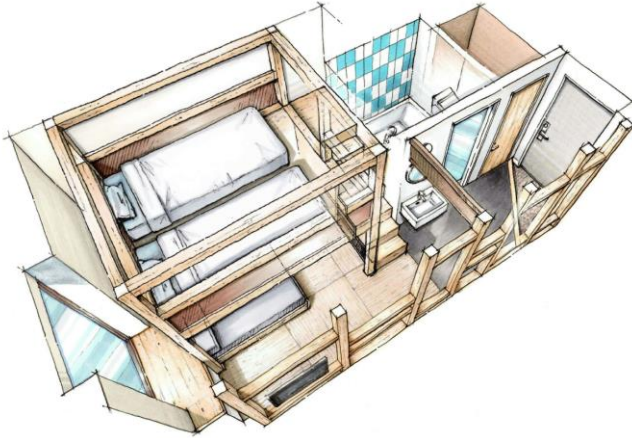


Three Unique Aspects of OMO5 Tokyo Otsuka

1. Guest rooms are designed in the style of a *yagura*; a type of traditional Japanese wooden tower. Our "Yagura Rooms" are perfectly fit for our playful, imaginative guests.
2. OMO Café is a casual social gathering space where food and the neighborhood come together. In the morning, we serve our signature dish vol-au-vents - the perfect morning pastry.
3. To make sure that guests are able to make the most out of their stay and to experience as much of the Otsuka area as possible, we've prepared a Go-KINJO Map and a guided tour led by an OMO Ranger.

Rooms

Guest rooms are designed in the style of a *yagura*; a type of traditional Japanese wooden tower. The *yagura* concept translates to high ceilings and a large window, ensuring guests don't feel cramped, despite the town's limited building space. Set on a tatami mat floor, a small Japanese cypress staircase leads up to the Yagura Bedroom. Clever build-ins on the walls and stairs mean plenty of room even for large luggage, and the overall design has a fun, "secret hideout" feel. With a comfy sofa space and fully-equipped bathroom, guests can kick off their shoes, relax, and make themselves at home.



High Ceilings & Big Windows

Building a *yagura* means having higher ceilings than other hotels. Sit in front of the floor-to-ceiling window and you'll see that the town is all around you.



Wall Storage

Multiple timbers set at 90 degree angles adorn the walls and make handy storage space. We've reworked the standard hotel closet to make better use of its space.



Staircase Storage

We took Edo period box staircases and gave them a contemporary twist. The arrangement of the squares is both functional and visually appealing.



Japanese Bathtub

Soak up to your shoulders in the Japanese-style bathtub. There's lots of shower space and a traditional checkerboard pattern on the walls.



Yagura Bedroom

The *yagura* beds upstairs will make you feel like you're cozied up in a secret attic bedroom. Don't let the excitement keep you awake!



Japanese Materials

The Japanese cypress wood and tatami mats give the space a casual, yet distinctly Japanese feel.

“OMO Café”

This is a casual cafe that provides good quality coffee and a delicious breakfast menu. Swing by anytime either during cafe time or bar time to relax or have fun chatting with your neighbors. Our breakfast features our signature vol-au-vents. Make your morning special with one of our vol-au-vents - the perfect morning pastry – to complement a cup of freshly-brewed coffee.

Lobby Lounge “OMO Base”

The “OMO Base” conveys current happenings in Otsuka, Tokyo. It’s the place where travelers and our local neighbors convene to connect. Your trip will be anything but ordinary as you explore the town and meet the people. New experiences only available here await, and through it all, we’re here to provide you with a casual and comfortable hotel stay.



Architecture Designer’s Message

The Yagura Room is the hotel’s signature feature. The 19 m² space is packed full of features and design innovations to maximize guests’ enjoyment. Multipurpose furnishings adorn the entire room, centered on the Japanese cypress loft beds we call the *Yagura Bedroom*.

The room makes extensive use of timeless Japanese materials and color schemes, such as wood and tatami mats. It also affords traditional Japanese comforts and customs, such as taking off your shoes in the entryway before relaxing inside, or rinsing off with a quick shower before soaking in a deep bathtub. It combines the excitement and intimacy of a secret hideout with the multifunctional nature of a cockpit. Above all else, the goal is for guests to have the freedom to enjoy the room in their own personal way.

The lobby was designed to be more than just where guests check in. It aspires to bring in the energetic atmosphere of the city streets outside and to make everyone even more excited about their trip. Featuring the café and bar, a gathering lounge, a library with info about the town, a table big enough for any use you can think of, and a window-side counter that’s perfect for people watching, we’ve built a public space that guests can enjoy however they please.



Mr. Tatsuro Sasaki, Tatsuro Sasaki Architects

Mr. Sasaki was born in 1979 in Hokkaido and attended the China Institute of Technology Department of Industrial Design (currently Design Science), where he earned his Master’s degree. After graduating, he joined Azuma Architect & Associates, where he supervised multiple hotel projects in Japan and across the world. His works include HOSHINOYA Karuizawa, HOSHINOYA Bali, and HOSHINOYA Tokyo. He left to form his own business in 2013 and currently also lectures at the Chiba Institute of Technology.

Experience “Go-KINJO”

Enjoy the hustle and bustle of this charming area with OMO and our neighbors and experience the joy of encountering new friends. Get out there and have fun with the locals!

*KINJO means neighborhood in Japanese.

Go-KINJO Map

Otsuka boasts a retro, Showa-era vibe during the day, and transforms into an exciting nightlife in the evening. Get local information from the Go-KINJO Map, go bar-hopping, sample some of Japan’s best sake, and take in some jazz or French can-can! There’s no shortage of exciting new drinks and music to experience after the sun goes down.

A Guided Tour Led by an OMO Ranger

Join a tour led by our unique OMO Rangers, who will show you the town’s hottest spots and one-of-a-kind areas that only the locals know. There’s an exciting adventure waiting for our guests, and a new face of the town that you never would have imagined.



OMO5 Tokyo Otsuka by Hoshino Resorts

- Address: 2-26-1 Kita-Otsuka, Toshima-ku, Tokyo, Japan
- TEL: +81-50-3786-1144 (Reservation Center)
- Official Website: <https://omo-hotels.com/otsuka/en/>
- From 6,500 yen / person for 1 night's stay (Tax and meals separate)
- No. of Rooms: 125
- Check-in at 15:00, Check-out at 11:00



City tourism hotel to discover the wonders of the city

OMO is a city-tourism hotel in a convenient city-center location, perfect for exploring the deep, urban culture. We consider the city centered around the hotel to be part of our resort, offering a variety of options to see, eat and shop. With the cooperation of the local community, city-lovers can get an insight into culture through our original tours and maps; sharing locals' all-time favorites to hidden gems only with you!



Hoshino Resorts was first established as a Japanese inn/ryokan by Kasuke Hoshino in 1914 in Karuizawa in Nagano Prefecture before it began the operation of other resorts in Japan. Today, it has evolved into a highly influential hotel management company and is run by 4th-generation family member Yoshiharu Hoshino. Providing a unique experience focused on the local charms of each destination and a high level of omotenashi, Japanese-style hospitality, the company has expanded rapidly out of Karuizawa since 2001 and now operates more than 40 facilities both in and outside Japan under five distinct brands: HOSHINOYA, KAI, RISONARE, OMO, and BEB.

